



# THE ROAD TO SDG6

Nizar Zaied  
Global Lead Water  
Islamic Development Bank



# Evolution of IsDB Group (1975 - 2018)



**Institution has Evolved from Single Entity to a Group of Six Entities**

# IsDB CAPITAL RESOURCES

**Inception**

**1975**

› **22 Member Countries**

**43 Years After**

**2018**

› **57 Member Countries**

› **Authorized:**  
› ID 2bn

› **Subscribed:**  
› ID 750m

› **Paid-up capital:**  
› ID280m

› **Authorized:**  
› ID100bn (\$140bn)

› **Subscribed:**  
› ID50bn (\$70bn)

› **Paid-up:**  
› ID4.9bn (\$6.9bn)

# Key Facts about IsDB

Established in 1975 with HQ in Jeddah, KSA

1,128 staff distributed across entities & regional hubs

A Unique Model of South-South Cooperation

Global MDB : Membership: 57 Countries Spreading over 4 Continents

11 Regional Hubs



- 11 Regional Hubs to be Operational by 2020
- 7 Regional Hubs established and functioning
- 4 Regional Hubs are being established Dubai, Egypt, Uganda and Suriname
- 14 Field Representatives in various Member Countries

# MAIN PRODUCTS AND SERVICES OF ISDB GROUP

Scholarship Programs



Special Assistance



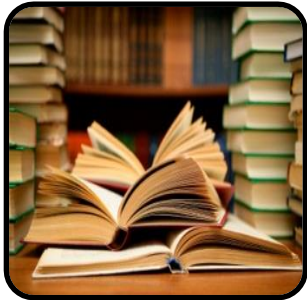
Trade Financing & Promotion of Intra-Trade, Regional Integration



Capacity Development & Technical Cooperation



Insurance of Investment & Export Credit



Science & Technology Program



Project Financing (Public & Private)



SMEs, Microfinance/ Fund / Asset Management



Research and Training (Islamic Economics & Finance)



Development of the Islamic Financial Services Industry

# THE CHALLENGES WE FACE

Water is still a challenge globally. By 2030:

- Water demand is expected to exceed supply by 40%
- Inadequate sanitation further depletes already diminishing water resources

Moving from MDGs to SDGs is a substantial increase in the level of ambition:

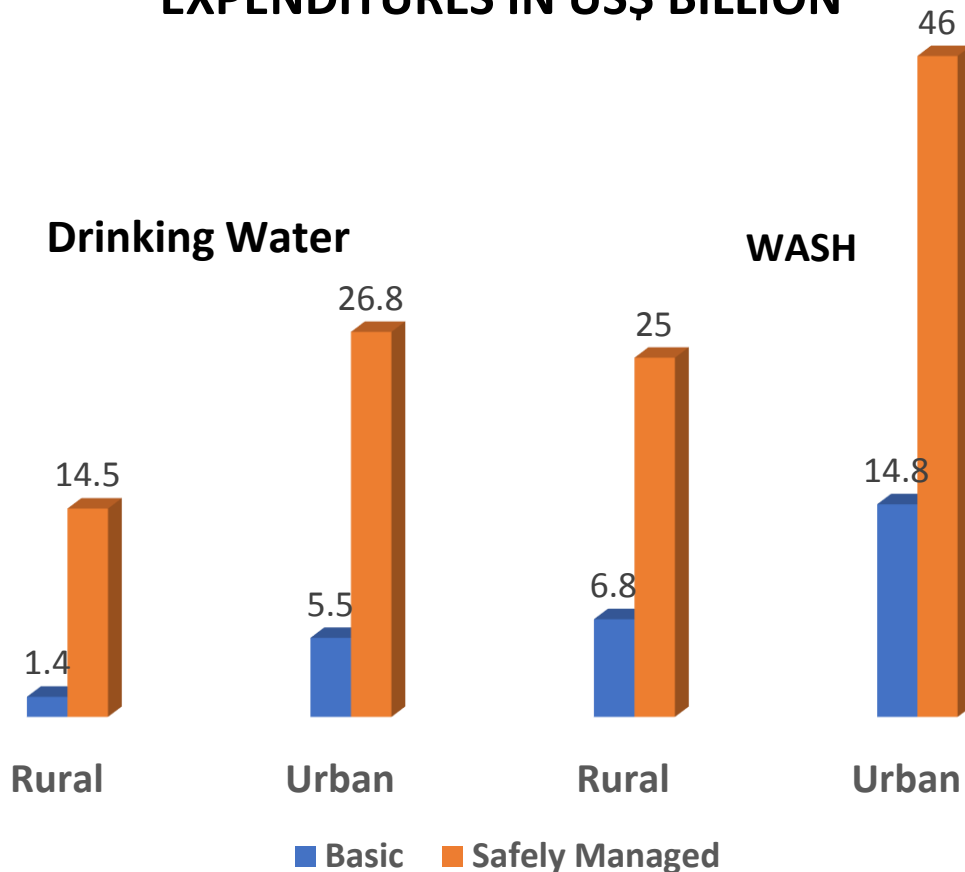
- MDGs concentrated on access, but SDGs are much broader
- Much greater funding is needed over an extended period
- Will need to bring private sector to bear on SDG6

# Water crises: in the top 5 risks in terms of impact, World Economic Forum for 8 consecutive years (WEF 2019)

	2012	2013	2014	2015	2016	2017	2018	2019
1	Major systemic financial failure	Major systemic financial failure	Fiscal crises	Water crises	Failure of climate-change mitigation and adaptation	Weapons of mass destruction	Weapons of mass destruction	Weapons of mass destruction
2	Water supply crises	Water supply crises	Climate change	Rapid and massive spread of infectious diseases	Weapons of mass destruction	Extreme weather events	Extreme weather events	Failure of climate-change mitigation and adaptation
3	Food shortage crises	Chronic fiscal imbalances	Water crises	Weapons of mass destruction	Water crises	Water crises	Natural disasters	Extreme weather events
4	Chronic fiscal imbalances	Diffusion of weapons of mass destruction	Unemployment and underemployment	Interstate conflict with regional consequences	Large-scale involuntary migration	Major natural disasters	Failure of climate-change mitigation and adaptation	Water crises
5	Extreme volatility in energy and agriculture prices	Failure of climate-change mitigation and adaptation	Critical information infrastructure breakdown	Failure of climate-change mitigation and adaptation	Severe energy price shock	Failure of climate-change mitigation and adaptation	Water crises	Natural disasters

# REACHING THE SDG6 WILL REQUIRE LARGE INVESTMENTS ~ \$ 114 billion PER YEAR

## EXPENDITURES IN US\$ BILLION

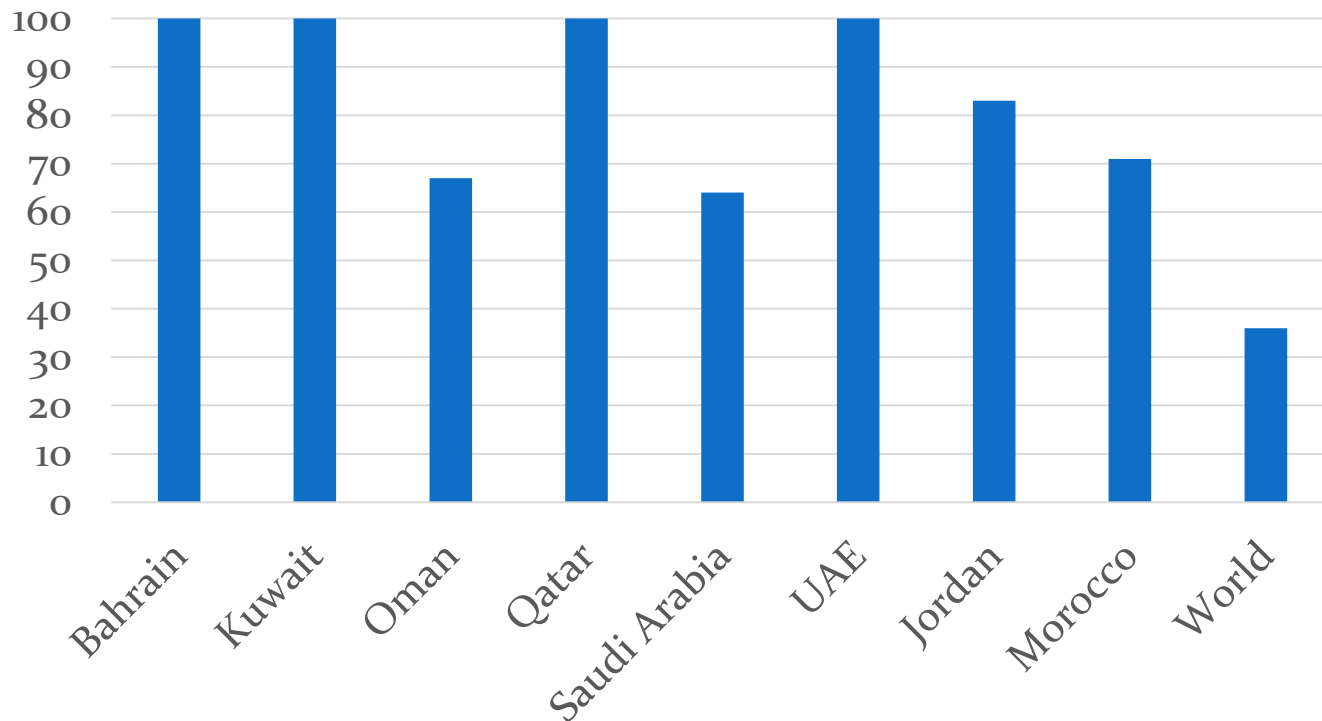


SANITATION: 60% of estimated costs including 40% for urban sanitation alone



# Main challenge in the Gulf Region: Water Stress (SDG 6.4)

**Pop. Exposure to Surface W.S. (%)**



## Water Pollution is another challenge (SDG6.3)

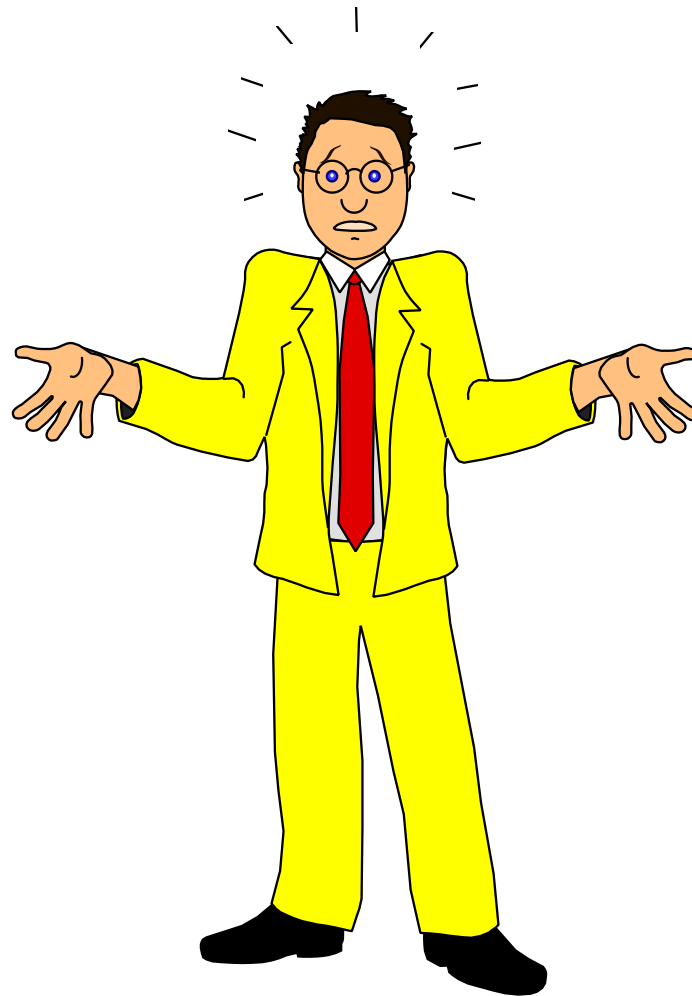
- Of 1 m<sup>3</sup> of effluent generated (MENA):
  - 18% of is treated and reused
  - 25% is treated and discharged
  - 57%, i.e. major portion, is discharged without any form of treatment
- The total global costs of inadequate sanitation are estimated at US\$ 260 billion per year  
(time savings + healthcare costs + lost productivity + premature mortality)

# Paradox...Water consumption in the GCC is among the highest in the world

- Water daily consumption GCC is in the high range: 250 - 500 lcd
- Much higher than other countries, better endowed with water resources
- Denmark: 112 lcd
- UK: 146 lcd



# WHAT TO DO?



## USING LESS WATER (SDG6.4)

To reduce water scarcity  
= To reduce water  
consumption

# USING LESS WATER

- Pricing
- NRW
- Harness Fourth Industrial Revolution for water (internet penetration end-2017 ME 64.5%, higher than world average 54%)
  - Remote leakage monitoring
  - Smart meters: DEWA, 200,000 meters in 2016 and 1 million in 2020
  - Water quality sensors

# USING LESS WATER

- About 1/3 of food produced every year, approx. 1.3 billion tons gets lost or wasted

➔ Reduce food wastage



## BROADEN SOURCES OF SUPPLY (SDG6.4)

- Desalination using renewable energy
  - Expand wastewater re-use
  - Example: NEWater in Singapore
    - Not waste water but *Used* water
    - Micro/Ultra filtration + RO + UV Disinfection
    - Domestic (45%, non potable use), and Commercial and Industries (55%)
- ... But needs: mindset change (used water as a resource), and infrastructure to collect used water



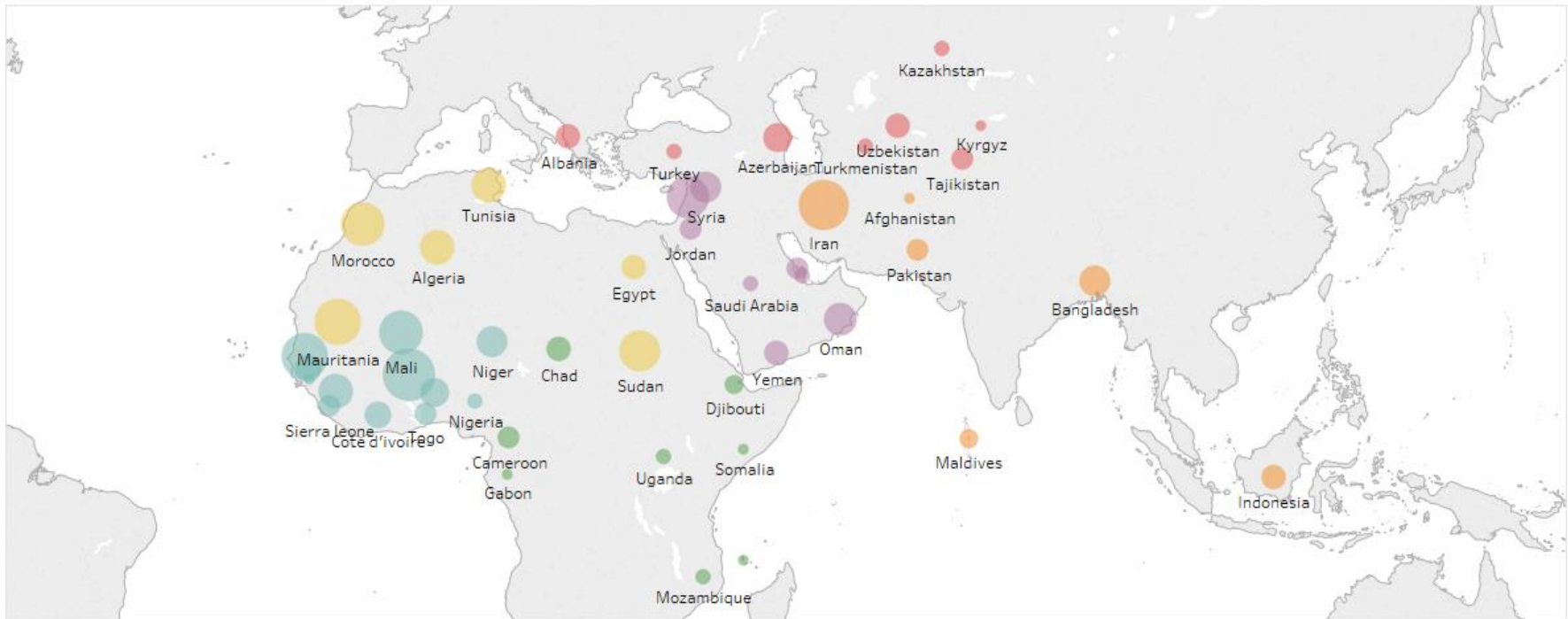
# IsDB providing financing...towards SDG6

\$9,439M  
of Approvals

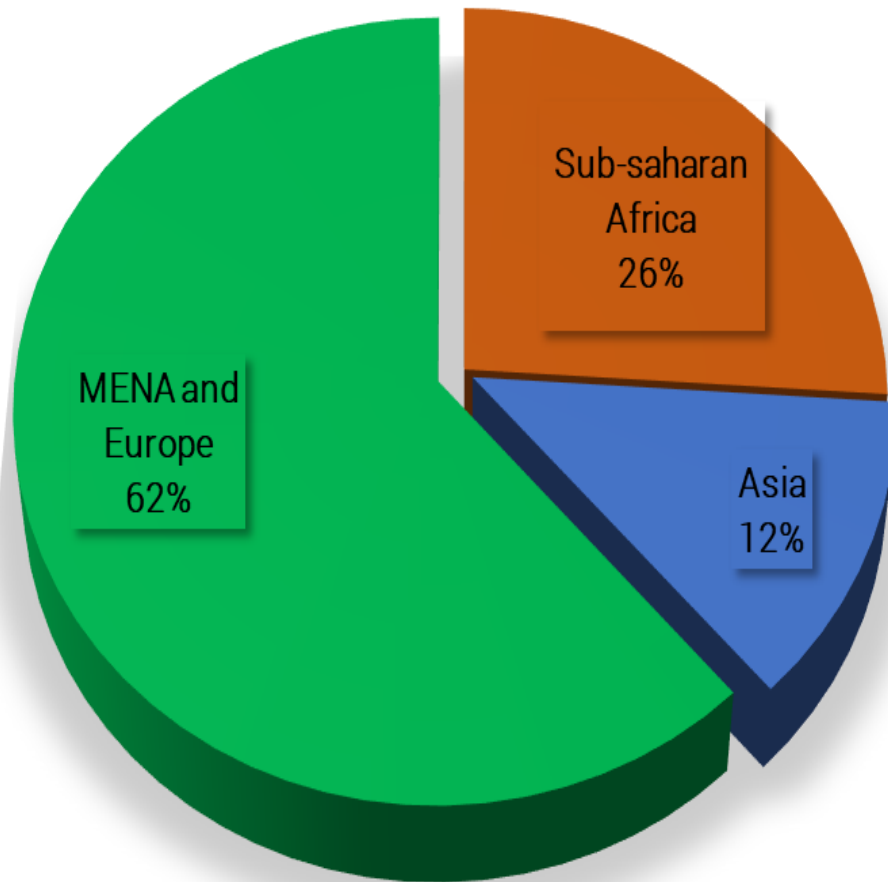
320  
Projects  
Approved

\$2,647M  
of Completed  
Projects

\$5,992M  
of Projects under  
implementation



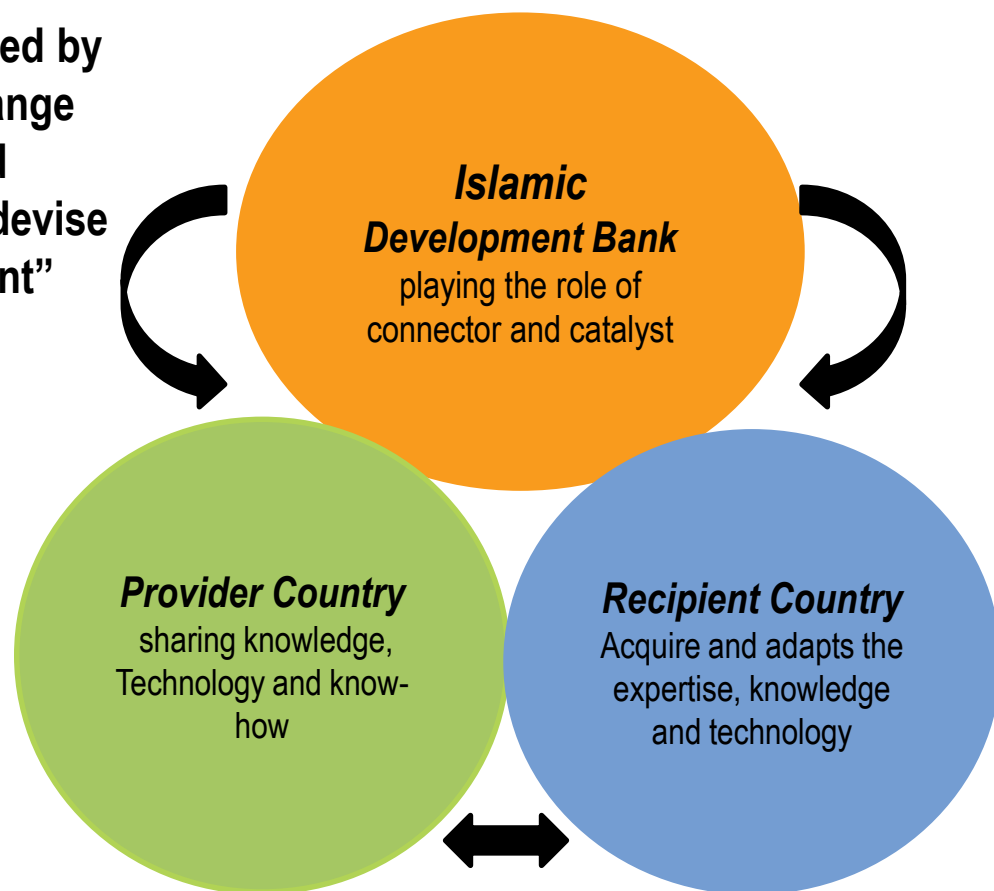
## IsDB Water Sector Active Portfolio (\$ 6.0 billion) / Distribution by Region



- Bahrain: Water Transmission and Storage Dev., \$ 191 mn
- Oman: Sohar to Ibri Water Supply, \$ 350 mn
- Qatar: Ras Abu Fantas Water Desalination, **PPP**, \$ 70 mn

# REVERSE LINKAGE MECHANISM

“A technical cooperation mechanism enabled by the IsDB whereby member countries exchange their knowledge, expertise, technology and resources to develop their capacities and devise solutions for their autonomous development”



**17** PARTNERSHIPS  
FOR THE GOALS





**THANK YOU**

**Email: [nzaied@isdb.org](mailto:nzaied@isdb.org)**